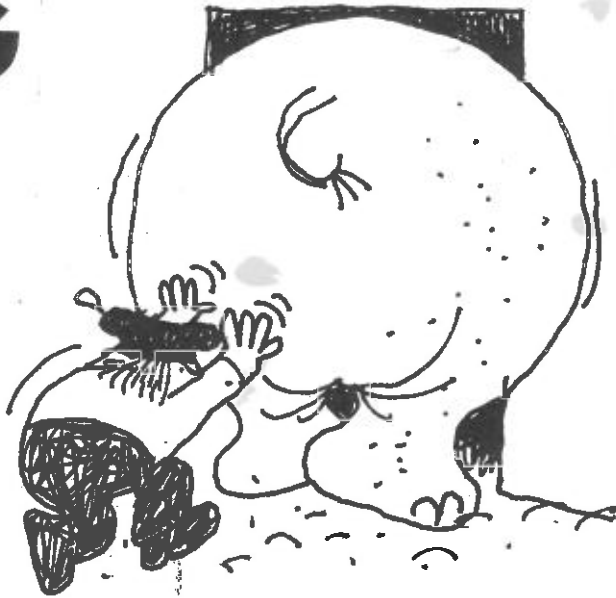


FILLING A ZOO

DO NOT FEED THE ANIMALS



Activity

Fill the zoo by using the following information (not necessarily in the order in which it is printed).

- 1 Parrots can see out of the entrance.
- 2 Snakes live between vultures and eagles.
- 3 Elephants live with antelope.
- 4 Eagles cannot see elephants.
- 5 Sea-lions, polar bears, brown bears, penguins, tigers, wild boar, rhinoceroses and elephants need water pools.
- 6 Zebra, monkeys, baboons, chimpanzees, brown bears, lions, tigers, leopards, pumas, wild boar and giraffes need trees.

- 7 No two 'cats' live next to each other.
- 8 Camels live with zebra.
- 9 No two members of the 'monkey' family live next to each other.
- 10 Tigers live between sea-lions and monkeys.
- 11 Sea-lions live next to polar bears.
- 12 Wild boar live between brown bears and chimpanzees.
- 13 Baboons live between leopards and penguins.
- 14 Lions live nearer to monkeys than to chimpanzees.